

ISMS PLATFORM

Integrated Security Management System



digifort

SIMPLE | POWERFUL | TRUSTED

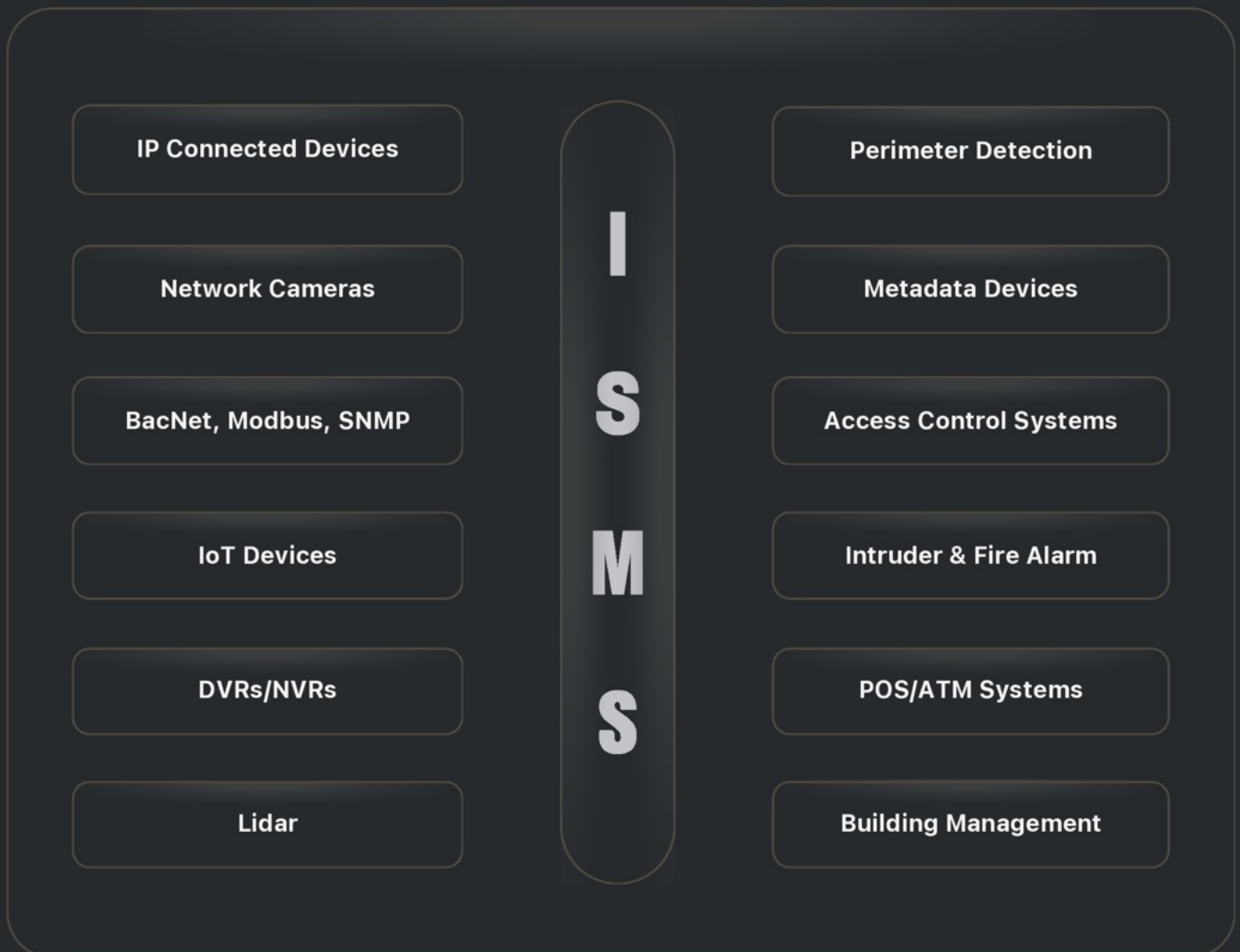


DIGIFORT ISMS

Beyond VMS, Redefining Security as ISMS

Digifort has transcended traditional Video Management Systems (VMS), evolving into a Unified Security Platform that seamlessly integrates and centralizes your entire security infrastructure within a single, powerful system.

Effortlessly Manage & Unify:



One Platform. Total Control.

With an intuitive interface, it ensures seamless control and situational awareness across your entire security ecosystem. With Digifort ISMS, security is no longer a fragmented puzzle, it's a unified solution that evolves with your needs.

ISMS isn't just a cost,

It's an investment in security, efficiency, and future readiness.



DIGIFORT SOLUTIONS

Modular Options for Enhanced Functionality

Digifort's core platform delivers all essential VMS functions, while our modular approach ensures you get exactly what your project requires—nothing more, nothing less. Choose from cutting-edge technology modules to enhance functionality and intelligence, creating a truly customized and future-ready ISMS.



**Neural & Edge
Analytics**



**Facial
Recognition**



**ANPR/LPR
Container ID Recognition**



SmartConnect



Dashboards



Evidence



Live Witness



Videowall



**Video & Audio
Redaction**



REDEFINE Centralized Management



DIGIFORT ISMS

Flexible Choices

- ✓ Enabling you to choose according to your projects and your requirements.
- ✓ Regardless of edition, they all have cybersecurity measures.

Digifort Editions



Digifort

EXPLORER

A reliable solution with essential features for small businesses.

- ▲ Client/Server
- ▲ Supporting Cameras
- ▲ Supporting DVR/NVRs
- ▲ Supporting Onvif



Digifort

STANDARD

For mid size application with more advanced features at an affordable cost.

- ▲ Synoptic/Operational Maps
- ▲ Record by Events
- ▲ I/O Devices Support
- ▲ Analytics & LPR (Requires License)



Digifort

PROFESSIONAL

Complete monitoring, automation, alarm and highly integrated solution.

- ▲ Bookmarks
- ▲ Object Links
- ▲ Master/Slave
- ▲ Active Directory



Digifort

ENTERPRISE

For large projects with unlimited tools, camera channels and functionality.

- ▲ Edge Recording
- ▲ Unlimited Users
- ▲ Unlimited I/Os
- ▲ Unlimited Maps

Open Platform

Digifort is a fully open platform, empowering customers with the freedom to select the optimal system that best aligns with their needs and budget—without vendor-imposed limitations.

Native Integration

The native integration, Reliable and the best performance! 400+ Brands and 10,000+ models and these numbers are constantly growing.

Scalable

Surveillance solutions that grow with your site from 16 cameras to 30,000 plus cameras.

Language

Digifort ISMS is translated into 19 languages, and we are adding more languages.



DIGIFORT ISMS

Strengths and Advantages of our Core Technologies

At the core of our ISMS platform lies the foundation of Digifort's stability and reliability. Recognized as one of the most robust platforms in the market, it has consistently earned the trust of customers worldwide. This proven performance is reflected in our commitment: Proven | Unified | Trusted.

**Excellent
Bandwidth Management**

**Elevate Solution
to the next level with Audio**

**Less H/W & Ongoing Expense
We Are Most Effective**

**Powerful Archiving
Hybrid Solution**

Premium CyberSecurity

Innovative Buffering Engine

**Brand Agnostic AI Metadata
Search Engine**

**Most Advanced Events
Management**

Backend Cloud Tools

Multi-Tennancy

Intuitive Design for Everyday Users

CAN TRAIN IN UNDER 20 MINUTES



DIGIFORT ISMS ARCHITECTURE

Tailored to Fit Your Project Needs

SITE 01



Cameras, NVRs & DVRs with
Video Metadata + Motion Metadata



DIGIFORT SERVER - DAS STORAGE



LOCAL OPERATORS

Any Type of Network Provided:
LAN, WAN, MAN, CELLULAR, VPN,...

SITE 02



DIGIFORT SERVERS



SAN/NAS STORAGES



FAILOVER SERVER



LOCAL OPERATORS

SITE 03



DIGIFORT SERVERS



MASTER



SLAVE



SAN/NAS STORAGES



ARCHIVING STORAGE



CLOUD/DATA CENTER STORAGE

WASABI, AZURE, AWS AMAZON,
ANY COMPATIBLE THIRD PARTY DATA CENTERS



LPR SERVER



ANALYTICS SERVER



FACIAL RECOGNITION SERVER



SMARTCONNECT SERVER



FAILOVER SERVER

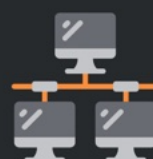


TRANSCODER

- MOTION METADATA
- ANALYTICS METADATA
- LPR METADATA
- FACIAL RECOGNITION METADATA
- IP DEVICES
- METADATA DEVICES
- PROTOCOLS



LOCAL OPERATORS



REMOTE OPERATORS



WEB CLIENTS



REMOTE OPERATORS



SOFTWARE IS ALIVE

Our developer continue to amaze us with progressive developments, software that is used by millions of people around the globe.



Make Our Platform Even Smarter and Useful Than Ever

Progressive Development

Version 6.5

Version 6.7

Version 7.0

Version 7.1

Version 7.2

Version 7.3

Version 7.4

Evolve & Adapt Integration Through Collaboration

Generative AI

Neural Analytics

LPR/ANPR

Facial Recognition

Lidar



Operator-Friendly Tools

Digifort is Enterprising, yet easy to use & intuitive

Digifort ISMS empowers operators with tools that offer ease of use, speed, and efficiency—creating a powerful, user-friendly platform that ensures rapid response, better management, and a clear view of your security environment.

Multi-Monitor Control

Manage up to 8 monitors per workstation for expansive, simultaneous surveillance across multiple cameras. Alternatively, create a virtual matrix video wall with unlimited screens, enabling operators to monitor all areas of concern in real time with ease. This flexibility allows for better situational awareness and faster responses to incidents.

Support up to 8 monitors per workstation.

Create a virtual matrix ecosystem with unlimited screens.

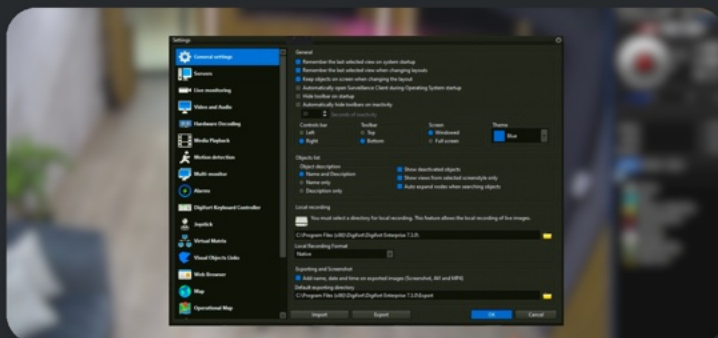
Virtual Matrix Group by Name.

Enabling management of large number of channels.



New Levels of Customization

Tailor the interface to fit the needs of your security operation. Whether you need a focused view of critical cameras or a broad overview of an entire site, Digifort offers customizable layouts. Operators can quickly adjust settings and organize camera views to match specific needs, streamlining their workflow and improving efficiency.



Customizable interface to match your security needs
150+ Settings.

You can Import & Export these settings.

Optimized Camera Grouping.

Putting You in Control



Operator-Friendly Tools

Digifort is Enterprising, yet easy to use & intuitive for the operators

Intuitive Object Linking on Live View

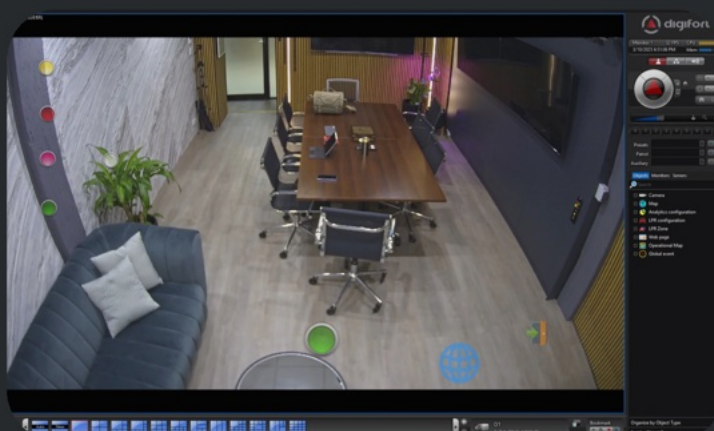
Our Object Linking feature enables operators to effortlessly navigate between cameras with a simple click, allowing them to track people or objects across a site. This intuitive function is invaluable in both live monitoring and during playback, ensuring operators can follow events as they unfold. Quickly move between cameras to get a complete picture of the situation, whether it's a suspect's movement across a site or tracking the flow of people in and out of secure areas.

Seamless Camera Navigation
With a Simple Click.

Track People or Objects
Across a Site Effortlessly.

Works in Both
Live Monitoring & Playback.

Activate Any Desired Action Within Digifort
as well as Integrated Third Party System.



Interactive Maps for Seamless Navigation

Digifort's interactive maps make it easy to visualize and manage large sites. Operators can interact with real-time video feeds directly from the map, click on camera icons for instant access to live footage, and monitor security events more effectively. This feature is especially useful in larger or more complex environments, where quick navigation is essential for timely decision-making.

Interactive Maps Simplify Site
Visualization & Management.

Click on Camera Icons
For Instant Live Video Access.

Improve Navigation & Response
in Large/Complex Environments.

Synoptic Map

Google Map

Offline Map

Live Tracking

Field of View

Find Camera in Maps





Unified Control of NVRs and DVRs

Digifort ISMS takes security management to the next level by seamlessly integrating NVRs and DVRs from multiple brands into one unified platform. This capability allows for centralized live viewing and playback across a wide range of hardware, eliminating the need for separate systems or interfaces.

Centralized Live Viewing and Playback

Multi-Site Operations

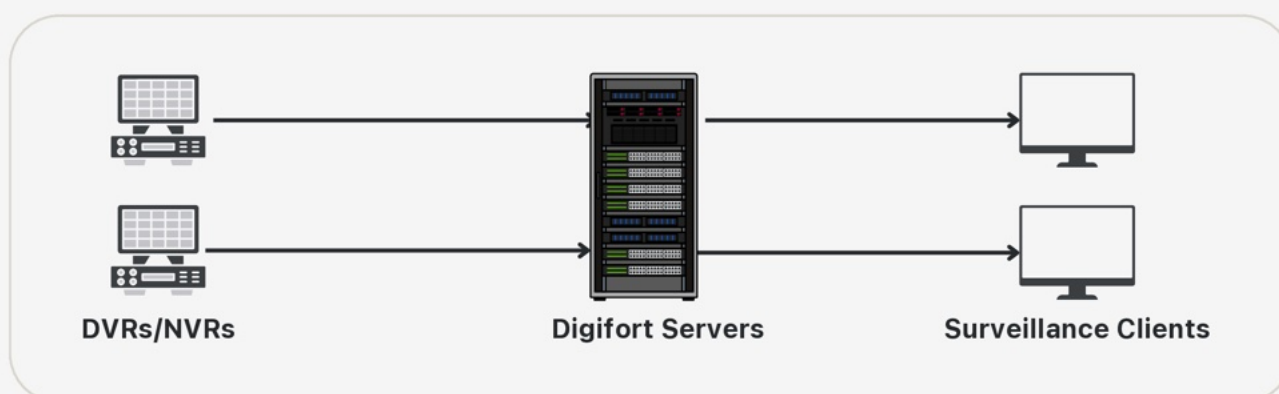
For large-scale operations, Digifort's unified control allows you to manage surveillance across multiple sites with different NVRs and DVRs in a single interface. Live video feeds, playback, and incident investigations are all accessible from one place.

Retail Security

Retail environments, often using a mix of NVR and DVR systems, can benefit from Digifort's platform by easily managing security footage from multiple locations, all while maintaining a centralized view of the entire operation.

Keep Your Existing Systems

- Transitioning to a new system should be done gradually.
- Integrate your current system with a modern solution.
- Expand your existing solution step by step.



Redundancy

- Live view on both DVR/NVR & Digifort.
- Record on both DVR/NVR & Digifort.
- One is the failover for the other.



Advanced Failover Support



Digifort's Advanced Failover Support is engineered for maximum reliability and minimum disruption, ensuring your surveillance system remains fully operational even in the face of failures. With comprehensive backup strategies, self-healing technology, and rapid failover capabilities, Digifort ensures your surveillance data is always protected, and your operations remain uninterrupted.

Key Features of Digifort's Advanced Failover Support

Digifort's failover system offers three distinct strategies:

Ratio N+1

Mirrored

Parallel Recording

This multi-tiered approach ensures that video feeds are recorded across different systems, giving you redundancy and protection against data loss.

Self-Healing Capabilities

The self-healing mechanism ensures that video streams are automatically restored after network or hardware failures. Main server receives recordings from a Digifort Failover server as a data source, thus allowing the system to download and merge recordings from a failover server to the main server automatically.

Rapid Failover Activation

Failover occurs within 3 to 15 seconds, ensuring near-instant recovery of your surveillance system during failure events. This ultra-fast failover ensures that your security system continues to operate without any significant delays, providing uninterrupted protection.

Support for Multiple Failures

Digifort's advanced failover design can handle multiple failures simultaneously. Whether it's a camera failure, network disruption, or server crash, Digifort's failover system ensures that your surveillance system keeps running, providing continuous monitoring and ensuring high system uptime.

Granular Control Over Failover Priority

Digifort's failover system allows you to pick and choose specific cameras or objects to fail over, based on their priority. This ensures that only critical devices are switched to failover, which reduces hardware costs while maintaining operational efficiency.

Automatic Synchronization of Failover Objects

Digifort allows for automatic synchronization between your primary system and the failover server. Any changes made to the main server will automatically reflect on the failover system, ensuring consistency and reliability. This dynamic synchronization ensures that your system remains in sync, providing a seamless integration of data during the failover process.

Engineered for Maximum Reliability & Minimum Disruption Digifort Performs a Failover For All of The Following Objects



Cameras



Edge Analytics

Failover support Video Content Analytics to continue operation.



Global Events

Data such as alarms & incidents, are preserved & synchronized during failover.



Edge LPR



I/O Devices

Maintain continuous sensor and alarm functionality during failures.



Operational and Global Maps

Protect operational and geographical maps for real-time situational awareness.



Bring Your Events to LIFE!

Unparalleled Efficiency in Alarm & Event Management

Digifort ensures that both security personnel and the system deliver precise, consistent, and proactive responses to incidents, reducing human errors and advancing control and coordination capabilities.

Types of Events:



REC Failures



IoT Sensors



AI Analytics



Fire & Smoke



Breakdowns



Weapons Detection



Facial Recognition



Behavioral Detection



Industrial Sensors



**Access Control
Events**



**Building Management
Systems**



**Number Plate
Recognition**



**Intrusion Detection
Alarms**



**Energy & Power
Management**



**Any Event Generated
by Protocols**

Based on the mentioned event types, we help you achieve truly amazing things.



Largest Action Library - Global Events

Real-Time Coordination Across Systems

Define Targeted Actions in Response to The Event Types Outlined



Send e-mail
to a group of contacts



Show objects
to operator



Show
video playback loop



Show
camera snap shots



Play
alarm sound



Send an instant
message to operator



Send objects
to virtual matrix



Send push notification
to mobile



Play
pre-recorded audio clip



Call presets
from PTZ



Activate
output action scripts



Trigger
global events



Activate or deactivate
system objects



Request operator
acknowledgment



Create
a bookmark



Download recordings
from edge device



Create
timer event



Send HTTP request

HTTP Event Actions:
GET - POST - PUT
PATCH - DELETE
SUBSCRIBE - UNSUBSCRIBE - RENEW

Make Multiple Requests with a Single-Event Action.



Stay Informed, Respond Faster

Manage Incidents Effectively with Global Events



Tailored Alerts

Configure alarm settings to align with your specific operational needs, including color-coded alerts, grouping by type, and priority levels.

Global Events Mapping

Real-time event pop-up with precise location directly on Operational Map, powered by Google Maps. Trigger exact event locations as they occur via visual notifications on Synoptic Map.

Scalable Event Processing

Whether managing a single site or a global operation, Digifort allows centralized control over incoming events and alarms for consistent and efficient management.

Alarm History

Map the events on our operational map with precise location or pop up with visual notification on our synoptic map

Enhanced Accountability

Full audit trails ensure compliance and facilitate post-event reviews.

Rapid Responses

Real-time alarms allow security teams to react proactively to incidents.

Targeted Industry Scenarios

Retail Sector

A break-in attempt at a storefront triggers an alarm:

- Security operators receive a real-time alert with live video from perimeter cameras.
- On-site personnel are notified via mobile devices to inspect the breach area.
- The system's audit trail allows for detailed reporting to law enforcement.

Healthcare Facilities

A restricted area in a hospital is accessed without proper authorization:

- Operators receive an alert with video evidence of the unauthorized entry and the person's movements.
- Doors are locked remotely, and security personnel are dispatched to the scene.

Transportation and Highways

A stolen car is detected by LPR systems:

- Alarms automatically send vehicle images and license plate details to highway patrol teams via their mobile devices.
- Video walls in a central traffic management center display all cameras tracking the vehicle's route, coordinating a live response.

Critical Infrastructure

A tamper event is detected on a utility site's fence:

- Drone cameras are activated to survey the area and provide live footage to operators.
- Visual and audio warnings are triggered at the site, deterring further intrusion.
- Any further notification which is configured will be activated.



SMART CONNECT

No More Isolated System

Organizations are facing the challenges of fragmented hardware systems, with each devices working in isolation. With Smart Connect, security is no longer a fragmented puzzle—it's a unified solution.



Access Control



Perimeter Detection



Intruder Detection



Fire Detection



Asset Management



IOT Devices



Our Smart Connect platform continuously expands, integrating new third-party systems as APIs become available.

Key Benefits

Digifort Smart Connect serves as the central gateway between Digifort and third-party systems, facilitating seamless communication across diverse devices. This integration allows access control, intrusion detection, and other critical subsystems to operate in unison—exchanging real-time data and automating actions within Digifort to enhance security and operational efficiency.

Bi-Directional Integration

Smart Connect supports two-way communication between Digifort and third-party systems, enabling Digifort to receive events and trigger corresponding actions. This bi-directional flow of information ensures that the system not only reacts to events but can also proactively manage devices and processes across the entire organization.



Real-Time Event Management



Trigger Actions



Manage Multiple Subsystems Simultaneously



Centralized Control



Protocols

SNMP

ASHRAE **BACnet™**

Modbus

Digifort seamlessly integrates with a broad range of protocols, elevating centralized management to a whole new level.

As a unified platform, it empowers users to manage multiple subsystems, receive real-time events from third-party systems, and trigger automated actions within Digifort. This powerful interoperability reflects our vision to redefine centralized management, delivering smarter, more connected, and more responsive security operations.

Use Cases

SNMP User Case



SNMP-enabled devices such as network switches, UPS systems, and fire alarms., Digifort monitors their real-time status—tracking power levels, temperature, and connectivity issues, directly within its interface. When a device failure occurs, like a network switch going down, Digifort instantly triggers an alert, correlates it with live video, and gives operators the insights they need to respond quickly and minimize downtime

BACnet User Case



Digifort receives real-time data from BACnet-enabled systems such as HVAC, access control, and environmental sensors and triggers automated actions based on predefined rules. For example, if a sensor detects high CO₂ levels or a BMS reports an HVAC failure, Digifort can focus cameras on the affected area, send alerts, and provide operators with live video and actionable insights for a rapid response.

Modbus Use Case



Modbus-enabled devices such as industrial equipment and temperature sensors, Digifort receives real-time data from these systems and triggers automated actions based on predefined rules. For instance, if a temperature sensor detects abnormal heat in a storage room or a conveyor system malfunctions, Digifort alerts operators, focuses cameras on the area, and delivers live video with actionable insights for a fast, effective response.





NEURAL ANALYTICS

Next-Generation AI Analytics with Precision Tracking

Harness the power of advanced deep learning with our latest AI-driven analytics, featuring four precision trackers that are essential for applying analytical rules effectively. Accurate tracking is the foundation of reliable analytics—without it, rules become ineffective.

Our state-of-the-art deep learning engine, optimized for NVIDIA GPUs, dramatically reduces false alarms by filtering out irrelevant events, ensuring that only critical activities are detected and flagged with precision.



Deep Learning
Object Tracker



Deep Learning
Skeleton Tracker



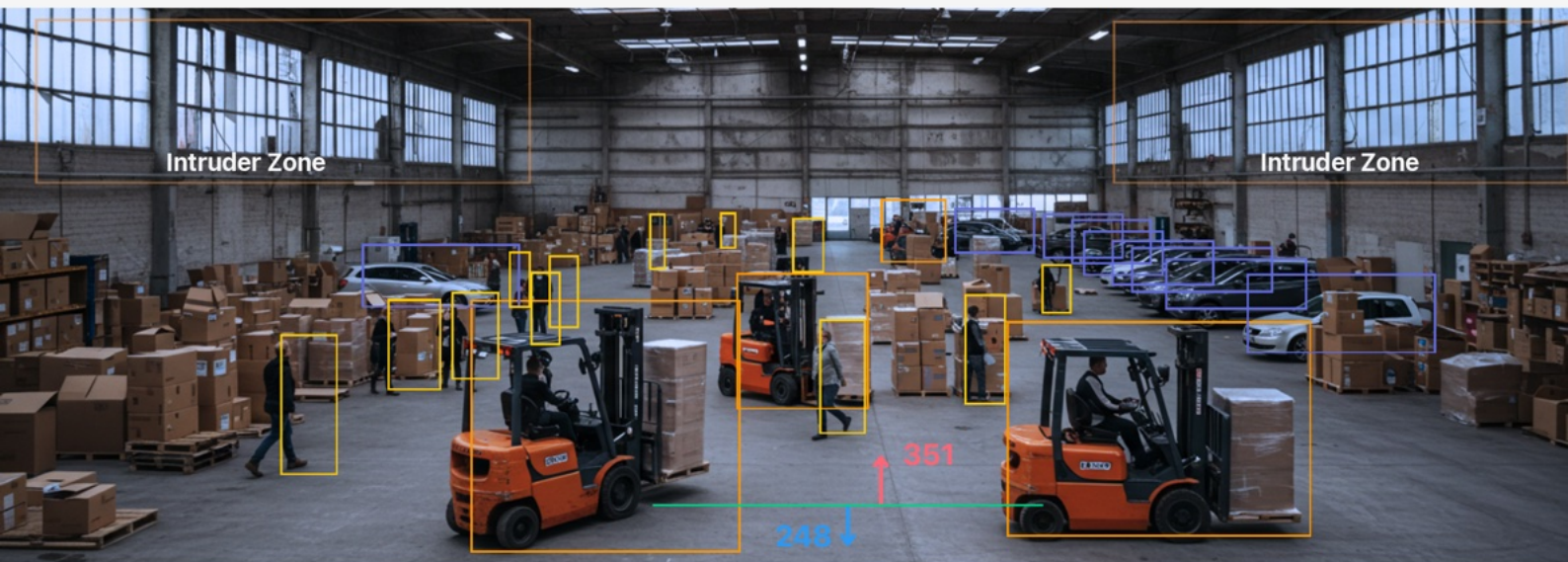
Deep Learning
People Tracker



Deep Learning
Fisheye Tracker

Applied Intelligence

Digifort Neural Analytics empowers businesses and organizations with precise, real-time insights into visitor and workforce behavior, delivering a transformative edge in situational awareness. Leveraging advanced deep-learning algorithms, our system can detect subtle movements within video footage, providing a powerful “exception” reporting tool that flags unusual activity, enabling security teams to act swiftly—whether dispatching personnel or alerting emergency services.



Metadata Library

Digifort makes all metadata available, enabling you to make the best use of the data by creating specific reports & interactions e.g. forensic search & string search.

Metadata Search Engine

Digifort's metadata search engine leverages AI-driven metadata to accelerate forensic investigations, reducing analysis time from hours to mere minutes—or even seconds.

Color

Size

Speed

Gender

Attributes

Direction

Type of Objects



NEURAL ANALYTICS

Logical Rules

logical rules provide a framework to combine analytic's comprehensive rules and filters to detect complex events in a video stream.



Intrusion Detection:

Detects when an object, person or vehicle is inside or crossing a zone or a line.



Dwell Detection:

Objects that dwell inside a zone for longer than pre-defined amount of time.



Directional Detection:

Objects that travel in the configured direction through a zone or over a line.



Removed Object Detection:

Significant objects are detected when carried out of a zone.



Abandoned Object Detection:

Detects the abandoning of an object in a predefined zone.



Object Counting:

Up to 40 on-screen counters linked to the detection rules.



Appear & Disappear Filters:

Detects objects on the basis of a pre-defined intensity of colors.



Object Classification:

Object classification is based on properties extracted from the object.



Stopping Detection:

Objects that are stopped inside a zone for longer than the defined amount of time.



Self 3D Calibration:

It does not require any camera calibration such as heights and field of view.



Tamper Detection:

Detects if a camera is moved, de-focused, covered or tampered with in any way.



Shake Resilient Tracking:

When there is a slight movement in the cameras due to wind or vibration.



Fall Detection:

Detect if a person is fallen suddenly into the ground.



Skeleton Tracker:

Skeletal based tracking a person delivers highly accurate and reliable tracking.



Tailgating Detection:

Detect if a person is fallen suddenly into the ground.



Enter/Exit Detection:

Objects are detected entering & exiting the zone defined.



People Tracker:

Highly accurate people tracking, counting, and queue management.



Thermal Imaging Camera:

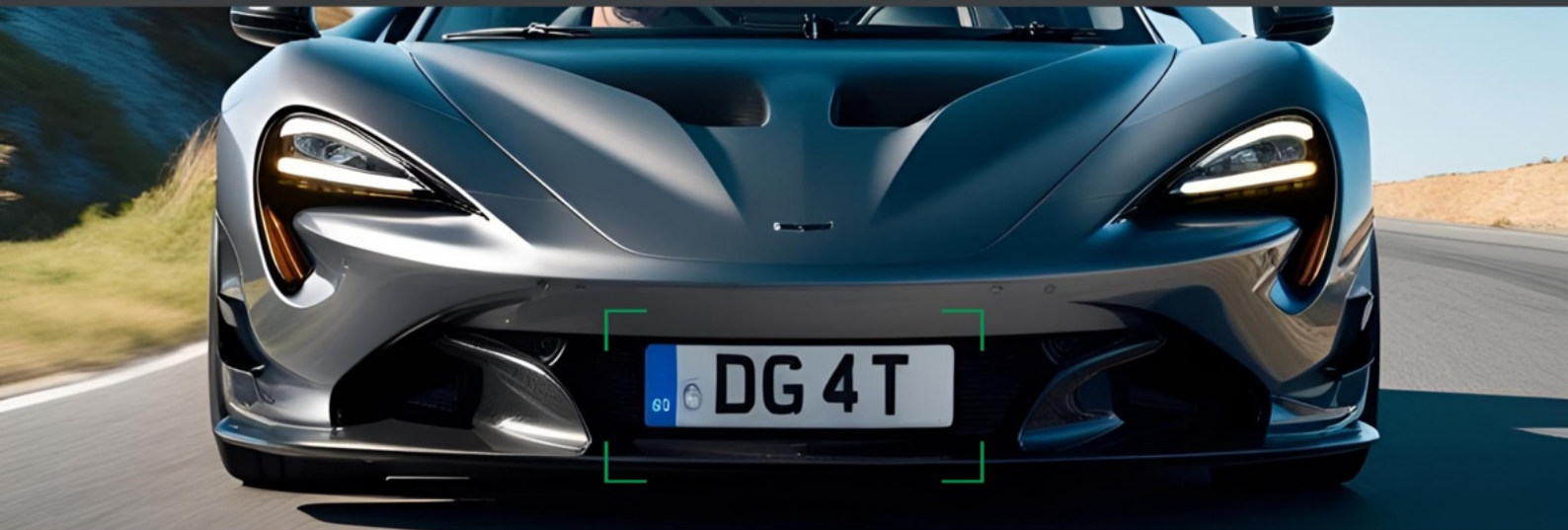
Digifort Neural Analytics works on Thermal imaging cameras for security, fire prevention and temperature monitoring applications.



LICENSE PLATE RECOGNITION - LPR

Enhanced Vehicle Monitoring and Control

Digifort ISMS offers cutting-edge License Plate Recognition (LPR) technology, seamlessly integrating with a wide range of security and traffic management systems. Whether for parking management, highway monitoring, or secure access control, Digifort's AI-powered LPR modules ensure fast, accurate, real-time vehicle identification you can rely on.



LPR Zone / Car Parks

Calculate the speed when a car passes from Point A to Point B under a certain time.

Receive alerts based on:

- Stays Longer
- When the car park is full
- Exits before the set time
- Plus more



MMC

Make, Model, Color.



LPR Bridge

Can query external databases and third party systems and retrieve information from recognized license plates in real time.



Vehicle Trace

Type the plate number & Get Route Trace of the Vehicle's Path.



Multi-Lane Support

External Database Integration

Digifort's LPR system supports integration with external databases, expanding its capabilities beyond mere plate recognition. By linking to various data sources such as HR directories, vehicle registration databases, or law enforcement records, the system provides comprehensive vehicle information in real time.

Diverse Applications

The integration of external databases opens up numerous applications, such as:

- Stolen Vehicle Alerts
- Employee/Visitor Management
- Parking Permit Verification



Highways Up to 250Km/h



FACIAL RECOGNITION

Enhancing Public Safety with Intelligent Identification



High Accuracy

Digifort's facial recognition technology is engineered to deliver unmatched accuracy, even in complex environments. Whether it's identifying individuals in a crowd or in low-light conditions, the system ensures precision and reliability.

White & Black Lists: A Next-Level Security Layer

Facial Recognition Solution is a powerful and proactive security feature within the Digifort ISMS platform, designed to identify individuals in real-time and immediately alert relevant authorities. This solution operates through two critical databases:



White List

A trusted database of VIPs, authorized personnel, and valued guests. This list is commonly used in hospitality, corporate environments, and exclusive venues to provide seamless access, personalized services, and enhanced customer experiences.



Black List

A high-security database that includes persons of interest, individuals wanted by law enforcement, and known criminals. When a blacklisted individual is detected, instant alerts are sent to security teams, law enforcement agencies, and designated personnel, allowing for swift and decisive action to prevent potential threats.

Why This Matters: The Next Layer in Public Security

Real-Time Threat Detection

Immediate identification of flagged individuals prevents unauthorized access, criminal activities, and potential security breaches.

Industry-Wide Application

Ideal for airports, stadiums, casinos, critical infrastructure, law enforcement agencies, and hospitality venues where security & identity verification are crucial.

Proactive Security Approach

Instead of reacting after an incident, our system provides preemptive alerts, allowing security teams to act before a situation escalates.



Industries We Specialize in

Market Expertise in Every Sector

Digifort has successfully delivered our powerful solutions in all of these verticals.



Banks



Airports



Hospitals



Education



Data Centers



City



Infrastructure



Retail



Courts



Factory



Container Ports



Military

Airports in action:

In retail environments, operators can quickly manage security feeds from multiple cameras across different locations. The ability to create a virtual video wall means that a security supervisor can view all store entrances, exits, and critical areas in real time, helping them detect suspicious behavior and respond immediately.



Critical Infrastructure in action:

In mission-critical environments, such as transportation hubs or national infrastructure, where quick response times are vital, the Surveillance Client allows operators to seamlessly manage video feeds from a wide range of cameras. With real-time monitoring and customizable views, incidents can be addressed with precision, minimizing potential risks.



Corporate Buildings in action:

For large corporate buildings with various buildings and access points, operators can use interactive maps to navigate through buildings and view live footage from cameras on different floors. The ability to link cameras together and track an incident across multiple locations ensures smooth coordination during emergencies.





Applications

Market Expertise in Every Sector

Public and Commercial Security

- Provide perimeter protection as a cost-effective service.
- Eliminate false alarms caused by wildlife, weather, and trees having the knock-on effect.
- Provide intelligent monitoring to City/Town locations, such as building sites, car lots, shops.
- Integration with Google Map providing real time specific location.



Traffic

Real-time feedback on events and automate emergency Call-out services.

Deep learning and AI analytics includes:

- Speed
- MMC (Make Model and Color of the vehicle)
- Direction, i.e. wrong way,
- Stationary objects, i.e. illegal stopping
- Accidents and breakdowns
- Allowing the monitoring of traffic conditions.

Retail

- Understanding a customer's traffic.
- Count the number of shoppers entering.
- Compare passing customers versus customers entering.
- Better knowledge of customer's behavior/trend.
- Queue management to improve customer's experience.





DIGIFORT DASHBOARD TOOL

Streamline Your Surveillance
for Real-Time Insights & Performance Metrics



Real-Time Performance Monitoring

The Digifort Dashboard Tool (DDT) is an advanced, intuitive platform that provides comprehensive, real-time visibility into your surveillance systems. Designed to offer a complete overview of all your camera feeds, system performance, and critical metrics, DDT consolidates vital data into a single, easy-to-navigate interface, empowering operators to monitor and manage your systems more efficiently than ever before.

Health State Visibility

Camera Health Status:

Get immediate alerts for any cameras that are offline, malfunctioning, or experiencing issues.

Recording Status:

Assess the frame rate of each camera to ensure smooth video feeds and quality recordings.

Frame Rate:

Assess the frame rate of each camera to ensure smooth video feeds and quality recordings.

Server and Connection Health:

Keep tabs on server performance, & network connections

Bandwidth Traffic:

Track network bandwidth utilization, ensuring that your system doesn't experience lag or downtime due to network congestion.



DIGIFORT DASHBOARD TOOL

Meaningful Metrics on Graphs & Charts

Data visualization is a cornerstone of DDT, enabling you to view key performance indicators (KPIs) via graphs and charts that make it easier to understand complex system data. These visual aids help you:

- Quickly spot trends in system performance and resource utilization.
- Identify any anomalies in camera feeds or server health.
- Track system performance over time to detect early signs of potential problems.

Time and Resource Savings

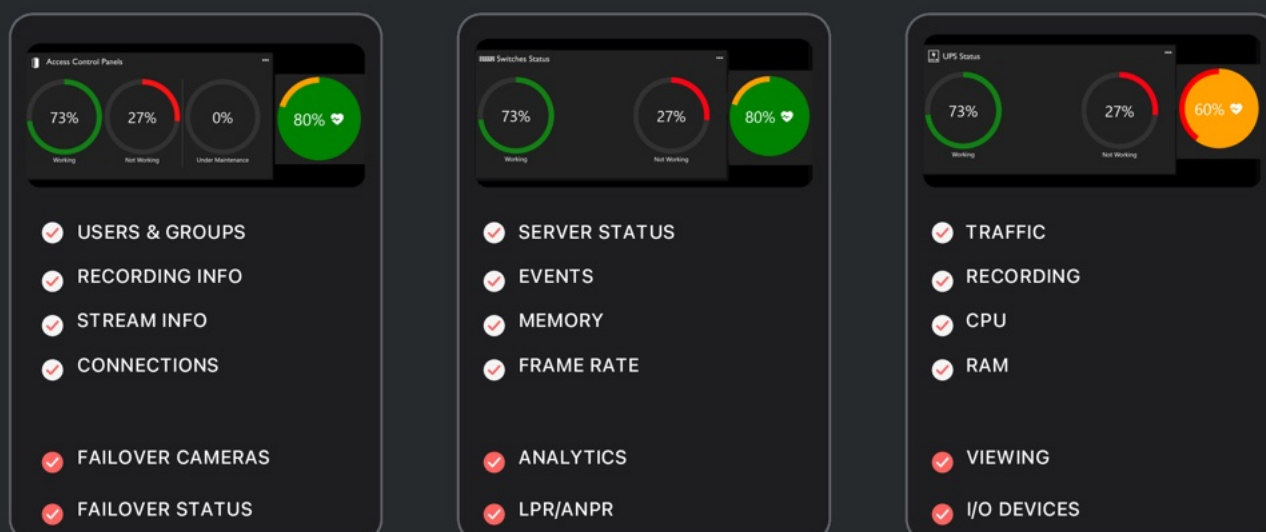
- Operators no longer need to manually check each device or camera feed individually. Instead, they can instantly access the status of all critical components, drastically reducing the time spent troubleshooting.

Improved Decision-Making

With the real-time data presented in easy-to-read graphs, charts, and status updates, security managers can make informed, quick decisions. Whether it's addressing a technical issue or adjusting system parameters, having real-time insights helps to:

- Ensure operational continuity by proactively addressing potential issues.
- Enhance overall system security through continuous monitoring and evaluation.
- Optimize resource allocation based on performance metrics.

The health state of your entire system is always visible at a glance. Using color-coded status indicators, you can quickly identify if any part of your surveillance network is experiencing problems.





CYBERSECURITY

Emphasizing Cybersecurity in Digifort: A Collaborative Effort



Why Teamwork is the Only Way Forward

The strength of Digifort's cybersecurity lies in teamwork and shared responsibility:

✓ Holistic Security

No single measure or participant can secure the system entirely—collaboration ensures gaps are minimized.

✓ Mutual Accountability

Everyone, from developers to end users, must understand their role in maintaining security.

✓ Continuous Improvement

Feedback from IT administrators and users helps enhance the system's security features.

✓ Trust and Transparency

Clear communication about security practices fosters trust among all stakeholders.



CYBERSECURITY

Emphasizing Cybersecurity in Digifort: A Collaborative Effort



Why Teamwork is the Only Way Forward

The strength of Digifort's cybersecurity lies in teamwork and shared responsibility:

✓ Holistic Security

No single measure or participant can secure the system entirely—collaboration ensures gaps are minimized.

✓ Mutual Accountability

Everyone, from developers to end users, must understand their role in maintaining security.

✓ Continuous Improvement

Feedback from IT administrators and users helps enhance the system's security features.

✓ Trust and Transparency

Clear communication about security practices fosters trust among all stakeholders.



CYBERSECURITY

Emphasizing Cybersecurity in Digifort: A Collaborative Effort

Different Levels of Encryptions



Core Cybersecurity Measures in Digifort

End-to-End Encryption

SSL/TLS Encryption

One-Way Encrypted Passwords

HTTP Digest Authentication

An added layer of security for authentication, ensuring even intercepted data cannot be reversed.

SRTP

(Secure Real-Time Transport Protocol)

AES-128 & AES-256 Encryption

Authentication Security

Two-Factor Authentication (2FA)

Strong Password Enforcement

Document Authentication Code

Session Management

Inactivity Disconnect

Audit Logging

Video Privacy

Dynamic Image Blurring

Video Redaction Tools

Option to Delete Recordings



CYBERSECURITY

Emphasizing Cybersecurity in Digifort: A Collaborative Effort

Different Levels of Encryptions



Core Cybersecurity Measures in Digifort

End-to-End Encryption

SSL/TLS Encryption

One-Way Encrypted Passwords

HTTP Digest Authentication

An added layer of security for authentication, ensuring even intercepted data cannot be reversed.

SRTTP
(Secure Real-Time Transport Protocol)

AES-128 & AES-256 Encryption

Authentication Security

Two-Factor Authentication (2FA)

Strong Password Enforcement

Document Authentication Code

Session Management

Inactivity Disconnect

Audit Logging

Video Privacy

Dynamic Image Blurring

Video Redaction Tools

Option to Delete Recordings



EVIDENCE

Comprehensive Incident Reporting & Searchable Case Management

**Ditch the Paper & USBs
Go Digital**



**From the Camera
To Valid Evidence**



Evidence is protecting sensitive data to improve crime & Incident investigations that are crucial and closely tied to public safety and law enforcement.

Move beyond traditional incident reporting, enabling users to link reports to relevant video footage for complete and accurate evidence. With customizable forms, priority assignment, and an integrated dashboard, the module enhances operational efficiency to a new level.

Key Features:

Incident Documentation

Record detailed incidents with precision, linking each report to specific camera footage. This ensures that every event is supported by visual evidence, making the system highly reliable for audits, investigations, and accountability.

Priority Assignment

Assign priority levels to incidents to differentiate critical situations from routine reports. This feature ensures that resources are allocated effectively, and urgent issues are addressed without delay.

Customizable Forms

Organizations can design incident forms tailored to their specific requirements and operational needs. Whether it's a security breach, maintenance issue, or other significant events, forms can be adjusted to capture all necessary details.

Integrated Dashboard

A centralized Evidence dashboard provides a comprehensive view of incidents, enabling users to monitor trends, analyze data, and track resolution statuses in real-time. It offers actionable insights, helping organizations optimize their incident response protocols.



New Incident

☐ Date & Time

☐ Priority Level

Incident Description

Incident Type

☐ Abnormal Behavior

☐ Accident

☐ Car Accident

☐ Shop Lifting

Attach Video Footage from the Digifort Server.

Attach any Documents Involving the Incident.



LIVE WITNESS

Real-Time Public Reporting

The Public can be the eyes and ears everywhere.

What Would You Do in These Circumstances? Do You Know Where to Report it?

Luggage Unattended
at an Airport
Suspicious Person

Brawl at Stadium
Medical Emergency

Public Violence
Drug Dealing
Illegal dumping



The Live Witness Module enhances public safety by enabling rapid incident detection and response. It empowers individuals to actively contribute to security efforts while providing monitoring stations with real-time, actionable intelligence. This creates a collaborative security ecosystem that is both efficient and responsive.

Key Features

QR Code Integration

Individuals can easily report incidents by scanning a QR code displayed prominently in public spaces. This seamless access point simplifies the reporting process and ensures the public can actively contribute to safety efforts.

Flexible Incident Reporting

The module supports a wide range of scenarios, including health emergencies, security threats, disturbances, and other critical events. Users can select predefined event types or provide detailed descriptions for more complex incidents.

Real-Time Communication

Witnesses can share live updates, including text descriptions, photos, and videos, directly with the central monitoring station. This real-time exchange of information enables quicker assessments and responses.

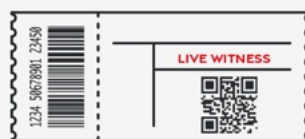
Enhanced Public Engagement

The module empowers the community to take an active role in safety and security. By providing a direct line of communication to security personnel, it fosters collaboration and trust between the public and monitoring authorities.

Back of the Stadium Seat



Back of the ticket



(Sports Game or Concert)

Airport





MOBILE APPS

Empowering Mobile Security with Advanced Mobile Apps



Mobile Client



Mobile Camera Pro

In today's fast-paced world, security personnel require tools that are as agile and dynamic as the environments they protect. Recognizing this need, Digifort has developed two innovative mobile apps tailored to empower security teams with remote access and real-time alerts, ensuring that critical responses are just a tap away—anytime, anywhere.

✓ Real-Time Responsiveness

✓ Operational Efficiency

✓ Enhanced Flexibility

✓ Cutting-Edge Innovation



Flexible Incident Reporting

The Mobile Client app brings unparalleled functionality and convenience to mobile security operations, enabling personnel to stay connected with security systems effortlessly. With features designed for efficiency and clarity, this app transforms smartphones into powerful security tools:

- **Camera Grouping:** Navigate large-scale surveillance networks with ease by organizing cameras into manageable groups.
- **Video Player with Timeline and Thumbnails:** Quickly locate and review critical events with an intuitive timeline and visual previews.
- **Global Event Activation:** Trigger system-wide events instantly, enabling rapid response to incidents.
- **Virtual Matrix:** Stream live views or playback footage directly to remote operators for enhanced collaboration.
- **Push Notifications with Custom Instructions:** Receive real-time alerts customized with actionable guidance to respond effectively.
- **Live View and Playback:** Monitor and analyze security footage in real-time, no matter where you are.

Mobile Camera Pro: Your Phone as a Surveillance Powerhouse

When traditional cameras are unavailable, the Mobile Camera Pro app turns any smartphone into a versatile CCTV unit. This app revolutionizes mobile security by expanding surveillance capabilities beyond physical cameras:

- **Stream and Record Anywhere:** Use your smartphone as a live-streaming surveillance device in locations lacking traditional camera coverage.
- **GPS Location Transmission:** Share real-time location data of incidents for precise situational awareness.
- **Bi-Directional Audio:** Enable seamless communication with individuals on-site, ensuring clear and immediate instructions.
- **Incident Tracking:** Stream live video feeds while providing continuous location updates to a remote monitoring team.

With these features, Mobile Camera Pro proves that smartphones can achieve results beyond the reach of conventional CCTV systems, bringing flexibility and innovation to modern security.



MOBILE APPS

Empowering Mobile Security with Advanced Mobile Apps



Mobile Client



Mobile Camera Pro

In today's fast-paced world, security personnel require tools that are as agile and dynamic as the environments they protect. Recognizing this need, Digifort has developed two innovative mobile apps tailored to empower security teams with remote access and real-time alerts, ensuring that critical responses are just a tap away—anytime, anywhere.

✓ Real-Time Responsiveness

✓ Enhanced Flexibility

✓ Operational Efficiency

✓ Cutting-Edge Innovation



Mobile Client: Seamless Command on the Go

The Mobile Client app brings unparalleled functionality and convenience to mobile security operations, enabling personnel to stay connected with security systems effortlessly. With features designed for efficiency and clarity, this app transforms smartphones into powerful security tools:

- **Camera Grouping:** Navigate large-scale surveillance networks with ease by organizing cameras into manageable groups.
- **Video Player with Timeline and Thumbnails:** Quickly locate and review critical events with an intuitive timeline and visual previews.
- **Global Event Activation:** Trigger system-wide events instantly, enabling rapid response to incidents.
- **Virtual Matrix:** Stream live views or playback footage directly to remote operators for enhanced collaboration.
- **Push Notifications with Custom Instructions:** Receive real-time alerts customized with actionable guidance to respond effectively.
- **Live View and Playback:** Monitor and analyze security footage in real-time, no matter where you are.

Mobile Camera Pro: Your Phone as a Surveillance Powerhouse

When traditional cameras are unavailable, the Mobile Camera Pro app turns any smartphone into a versatile CCTV unit. This app revolutionizes mobile security by expanding surveillance capabilities beyond physical cameras:

- **Stream and Record Anywhere:** Use your smartphone as a live-streaming surveillance device in locations lacking traditional camera coverage.
- **GPS Location Transmission:** Share real-time location data of incidents for precise situational awareness.
- **Bi-Directional Audio:** Enable seamless communication with individuals on-site, ensuring clear and immediate instructions.
- **Incident Tracking:** Stream live video feeds while providing continuous location updates to a remote monitoring team.

With these features, Mobile Camera Pro proves that smartphones can achieve results beyond the reach of conventional CCTV systems, bringing flexibility and innovation to modern security.



Beyond the Hype: Trustworthy Surveillance Technology

The goal is to equip integrators and end-users with valuable insights, enabling them to make smarter and more informed choices when selecting a VMS solution.

At Digifort, integrity shapes how we present and deliver the latest video surveillance technology. We consciously choose clarity over-exaggeration, ensuring that our promises remain realistic and attainable.




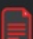



What sets us apart:

- **Realistic Promises:** We don't sell based on hype or inflated claims. Instead, we provide honest, achievable solutions tailored to real-world scenarios.
- **Transparent Communication:** Clear, precise explanations ensure you fully understand the capabilities and limitations of our technology.
- **Proven Reliability:** Our commitment to careful planning and execution means we consistently meet—and often exceed—client expectations.

By steering clear of hype, we build lasting trust and genuine partnerships, delivering surveillance technology that reliably performs exactly as promised.

This brochure provides an overview of our ISMS, highlighting key solutions and features in brief. It is not an exhaustive guide to every solution we offer.

For a deeper understanding of specific products and functionalities, dedicated brochures are available upon request for the following:

-  SmartConnect
-  Neural Analytics
-  ANPR/LPR Recognition
-  Encryptions in Digifort
-  DDT-Digifort Dashboard Tool
-  Audio Solutions
-  Cloud Archiving



The brochures listed above may not be available at the time this brochure is printed. It is the sole responsibility of the company or individual to verify their availability with our representatives.



Licensing model

Digifort licenses are offered on a perpetual basis, providing long-term value without the need for ongoing subscription fees or Software Maintenance Agreements (SMA). Once purchased, the license remains valid indefinitely, empowering our customers to deploy and rely on our solutions without concern for annual renewals or expirations.

Please note: on-site services, such as labour to perform version updates, are not covered under the free update policy and may incur separate costs. These services may be subject to separate arrangements with certified partners or service providers.

Integrated Module Licensing

As part of our ISMS (Integrated Security Management Solution) offering, we also integrate and distribute third-party module licenses. These are subject to the policies and SMA requirements of their respective vendors. Many of these modules require annual fees for software updates, priority support, or feature access.

These fees and renewals are available through Digifort and are handled in accordance with each third-party provider's terms.

Please note that third-party modules are not governed by Digifort's VMS licensing model and are independent of Digifort's VMS license model.

Major Version Upgrades

While Digifort licenses are perpetual and include free updates within the same version series (e.g., 7.0 to 7.9), upgrades to a new major version (e.g., version 8.0) represent significant architectural and functional advancements, and as such, may be subject to upgrade fees.

We are committed to supporting our loyal customers. Special upgrade pricing will be offered to existing users, and in certain cases—such as recent purchases of the current version—free upgrades may be granted at our discretion.

Upgrade eligibility and pricing details are available through the Digifort team.

Our Licensing policies are subject to change without notice, and we reserve the right to make adjustments to them.



CONTACT US

We're Here for You Worldwide

Wherever you are, our international teams are ready to assist you. Please find the contact details for your nearest office below.

Americas

USA

sales.usa@digifort.com

Brazil

contato@digifort.com.br

Argentina

operaciones@digifort.com

Colombia

info.colombia@digifort.com

Mexico

contacto.mexico@digifort.com

Asia Pacific

Australia/New Zealand

info@digifort.com

Hong Kong/Taiwan

a.sales@digifort.com

Thailand/Vietnam

a.sales@digifort.com

Malaysia/Singapore/ The Philippines

a.sales@digifort.com

India

i.support@digifort.com

Europe

UK

eu.sales@digifort.com

France

fr.sales@digifort.com

Middle East & Africa

UAE

e.sales@digifort.com

Qatar

e.support@digifort.com

Egypt

e.support@digifort.com

Saudi Arabia

e.support@digifort.com

Oman

e.support@digifort.com

Bahrain

e.support@digifort.com



SIMPLE | POWERFUL | TRUSTED

Disclaimer:

This brochure provides information on Digifort's advanced analytics solutions, powered by VCA Technology, which provide intelligent video analysis and event detection. System performance may vary depending on site conditions, camera placement, network infrastructure, and integration parameters.

For optimal results, we strongly recommend consulting with our technical team to ensure proper system design, configuration, and deployment tailored to your project requirements, while also receiving the latest feature updates and best practices.